

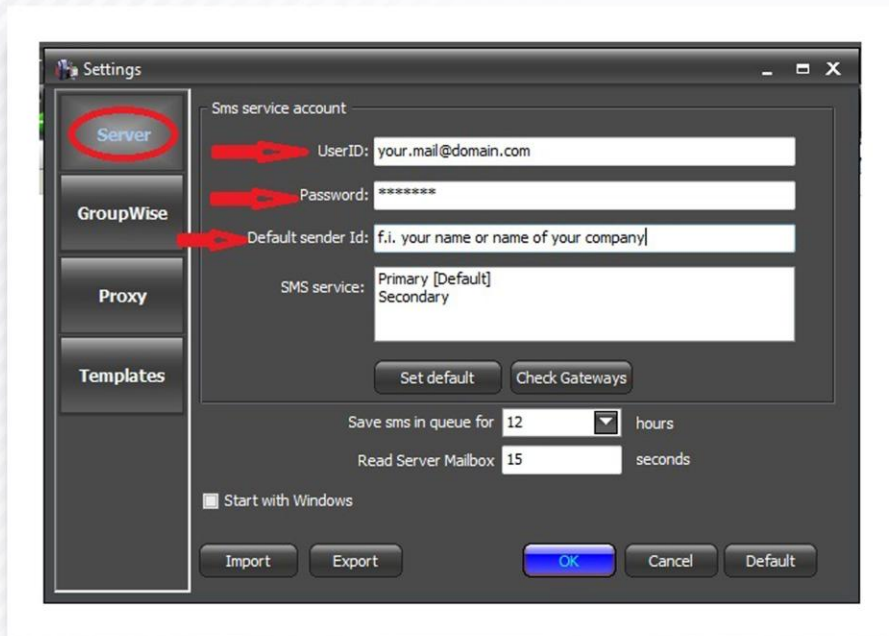
# Quick Configuration User Guide

# 1 Step

## Server tab:

enter the email name, you used for the registration on the [www.skypro.eu](http://www.skypro.eu), to use SMS text messaging service.

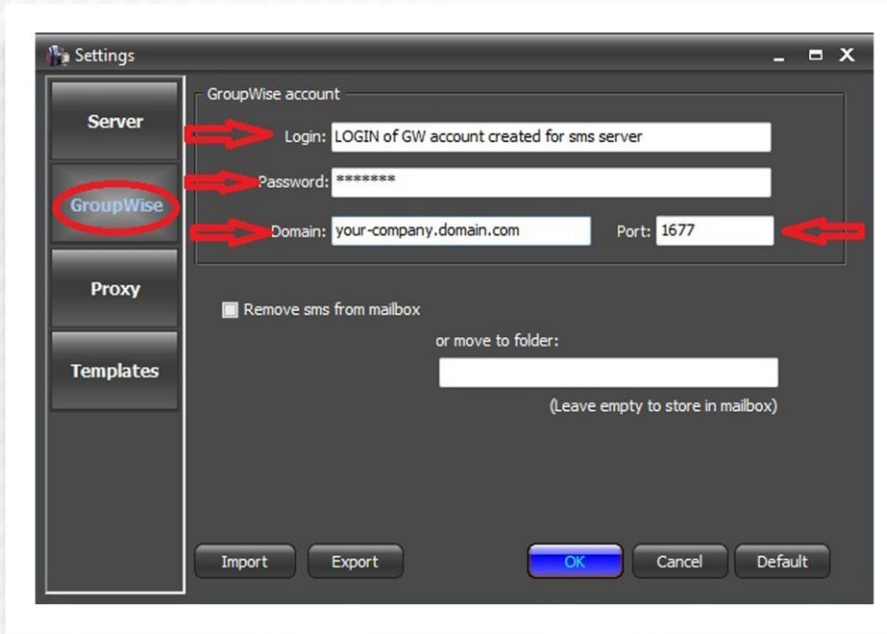
**Please note:** Password was sent automatically to your mailbox after registration.



We add 2 USD to this account for the trial period. You can also use this account after the trial credits expire.

## 2 Step

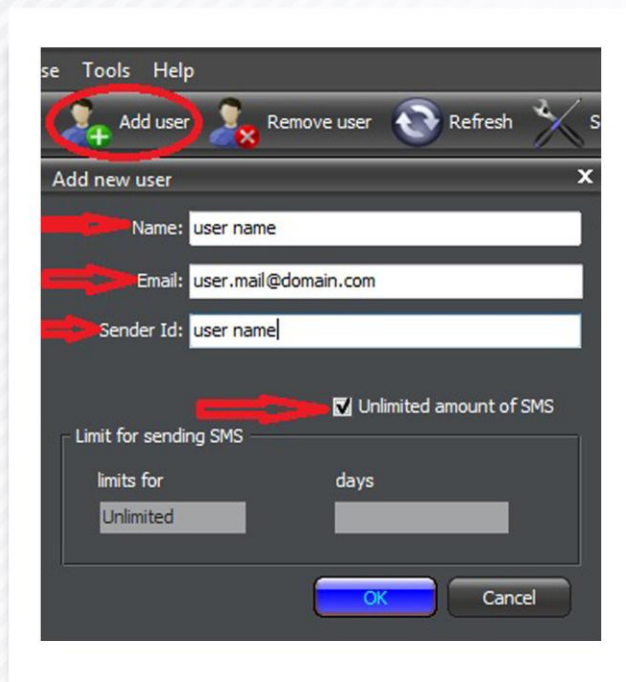
We recommend you to create a separate GroupWise account (e-mail address) for SKySMS system to be used as transport layer between server and clients. Please enter **login** and **password** you created for this account in the GroupWise tab.



### 3 Step

Add users who will be allowed to send SMS text messages.

**Remember:** in the trial version you can add only 20 users. Type in user name, e-mail address and sender id. Set the limits for the user.



## 4 Step

Configure your SKySMS Client with the Server. Enter GroupWise e-mail address that you created for SKySMS Server (Settings ->Server E-mail address).

