

IDM Audit Dashboard

for Micro Focus Identity Manager



Audit dashboards for improved compliance and security within your IDM environment.

The IDM Audit & Compliance Dashboard is a flexible, simple to install and easy to use audit tool. It creates comprehensive dashboards and reports for audit, security and compliance purposes.



Dashboards

The different dashboards offer accurate real time charts of events, driver channels and workflows.

Audit Dashboard

The "Audit Dashboard" shows all events that have taken place in a specific period of time within your IDM engine. The information is arranged in comprehensible parts:

- ▶ **EVENTS:** a histogram shows all events on different objects in a timeline
- ▶ **OPERATIONS:** how often have the different operations taken place (add, modify, move, rename, delete)
- ▶ **CLASSES:** which object classes have been processed how often
- ▶ **TRENDS:** is there a specific trend on a specific class to have more or less events

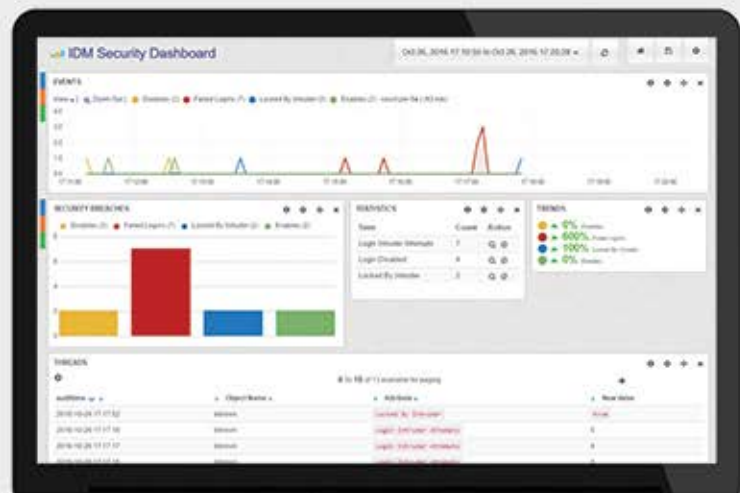


The predefined audit dashboard can be edited as needed. The way the information is visualized can be adjusted to individual preferences. Additionally new dashboards can be created as well.

Security Dashboard

The "Security Dashboard" identifies security relevant events. These are especially enabling or disabling of users, intruder detection, and failed logins. The different graphs illustrate:

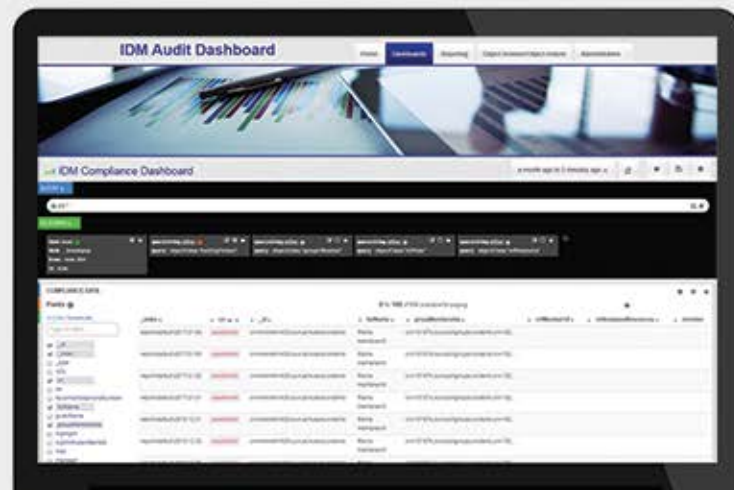
- ▶ **EVENTS:** all security relevant events on a timeline
- ▶ **SECURITY BREACHES:** possible security breaches by enabling logins, failed logins or locked by intruder detection
- ▶ **STATISTICS:** the amount of different possible security breaches
- ▶ **TRENDS:** is there a specific trend in possible security breaches
- ▶ **THREADS:** all events in details that could lead to a security breach



Compliance Dashboard

The "Compliance Dashboard" enables the comparison of attribute values at different dates.

- ▶ **QUERY:** search for specific objects by their common name or any other attribute
- ▶ **FILTERING:** predefined filter to easily select between different object classes
- ▶ **COMPLIANCE DATA:** see and compare the data in different period of time



Driver Dashboard

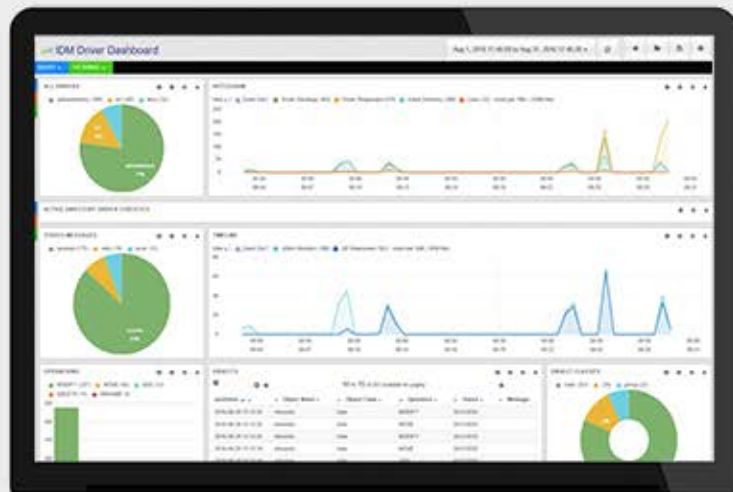
The driver dashboard shows in detail every event, that has been processed by a driver either by the subscriber, the publisher or both channels. It also presents a summary of all events processed by the drivers.

Summary

- ▶ Pie chart of the amount of processed events by each driver
- ▶ Histogram of all events processed by all drivers differentiated by events sent and responses received

Per driver

- ▶ Pie chart with summary of all messages received from the target system
- ▶ Histogram of all driver sends and system responses
- ▶ Bar chart of all different events (add, modify, rename, move, delete)



- ▶ Pie chart of the different object classes
- ▶ Detailed list of all processed objects



Workflow Dashboard

The workflow dashboard presents a detailed graphic about every workflow that has been processed by the system. You see:

- ▶ A histogram with all processing, denied or approved workflows
 - ▶ A pie chart with the number of all workflows that have been started in a specific timeframe
 - ▶ The status of all workflows started in the defined timeframe
 - ▶ The main recipients of workflows and the amount of workflows started for these recipients
 - ▶ The average duration of all workflows, approved or denied workflows
- ▶ A pie chart of the different workflow categories, that have been started
 - ▶ The main initiators of workflows and the number of workflows they have started

Improve your compliance and security using different dashboards, predefined reports or the integrated Object History Browser.



Reporting

- ▶ Comprehensive and flexible audit report
- ▶ Scheduled snapshots for historical data
- ▶ Historical user, group, resource and role reports
- ▶ History report of user-role and role-user assignments
- ▶ Multiple different historical object reports
- ▶ Report wizard to create own reports on the fly



Dashboards

- ▶ Predefined, ready to use dashboards
- ▶ Real time audit event dashboard
- ▶ See old and new values on attribute changes
- ▶ Security dashboard to detect breaches
- ▶ Track driver channels with the driver dashboard
- ▶ Monitor workflows and process time
- ▶ Adapt existing or create your own dashboards



Object History Browser

- ▶ Browse through historical object data
- ▶ Scheduled automatic snapshots of directory data
- ▶ Single object restore
- ▶ Compare historical data
- ▶ Multi tenant ready



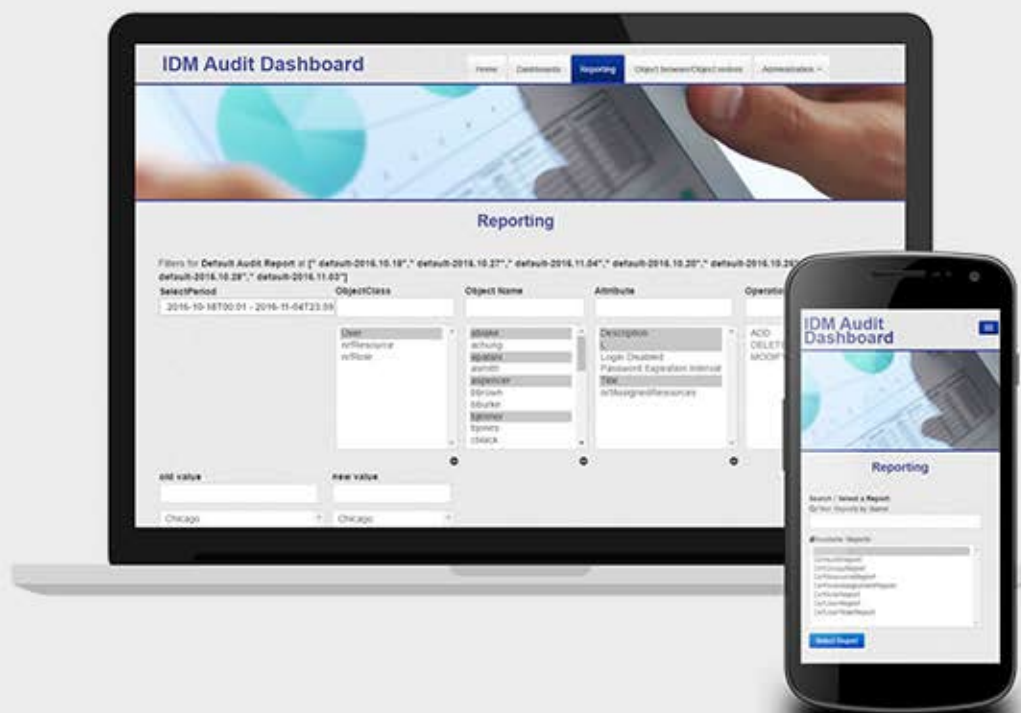
Reporting

Build audit and historical reports, export them to PDF or XLSX, compare data and much more.

The reporting server is a very powerful instrument to create reports on changes in the IDM engine as well as historical object data. A report can be created on the fly with the integrated report wizard or can be created and modified with the built in report editor.

By default you have:

- ▶ Audit Report
- ▶ User Report
- ▶ Group Report
- ▶ Role Report
- ▶ Resource Report
- ▶ User-Role Report
- ▶ Role-Assignment Report
- ▶ Driver Report (in development)
- ▶ Workflow Report (in development)



Download and try the Audit & Compliance Dashboard for free.

You can download a fully functional version from our website and try it for free. We do offer complimentary remote support and training during installation and setup.

Feel free to contact us directly with any questions you might have. You can reach us online via our live chat, you can send us an email or call us in one of our offices.

We look forward to hearing from you!

To get more information or to purchase the IDM Audit Dashboard contact us:



sales@skypro.us.com



+1 321 373 0170



www.skypro.eu/idm/index.html

SKYPRO AG

Gewerbestr. 7
CH-6330 Cham
+41 41 741 4770

SKYPRO USA Inc.

1600 W Eau Gallie Blvd.,
Suite 205 M, Melbourne, FL 32935
+1 321 373 0170

Email: info@skypro.ch

Web: www.skypro.ch

Web: www.skypro.us

