



Quick Configuration Guide

SKySMS Server version 1.1.18 or higher

SKySMS Client version 1.3.14 or higher

SKyPRO AG,
Gewerbestrasse 7, 6330 Cham
Switzerland,
+41 41 741 4770

SKyPRO USA,
4700 Millenia Blvd., Suite 175,
Orlando, FL 32839
+1 (407) 442 0285

Getting started with SKySMS

Welcome to SKySMS. This Guide walks you through the basic steps to install and setup the SKySMS Server and the SKySMS Client.

Step 1 Install the SKySMS Server.....	2
Step 2 Enter your SMS service account information	3
Step 3 Set up your email account	4
Step 4 Add users	6
Step 5 Install and configure the SKySMS Client.....	7

Step 1 Install the SKySMS Server

Register to download and run the installation file from [SKyPRO website](#).

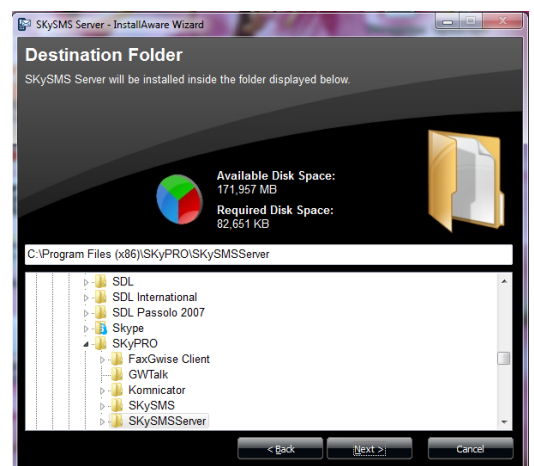
Double click the installation file. Select a language for the installation.

Follow the steps in the [Setup wizard](#), accept the license agreement and click [Next](#) to continue through each step.



Select a folder where you would like to install the components of this application.

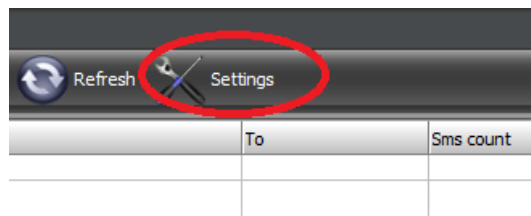
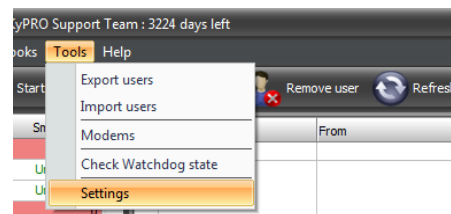
Complete the installation.



Click the **SKySMS Server shortcut**.

The main SKySMS Server window will appear.

There are two ways to open the settings window: from the menu **Tools-> Settings** and using the **Settings button**, placed on the toolbar.



More information about the SKySMS Server settings you can find in the [SKySMS Server Manual](#). But to start the SKySMS Server quickly you can configure only the essential settings while leaving the default values in the additional settings. It is always possible to complete the configuration later at any time according to your needs.

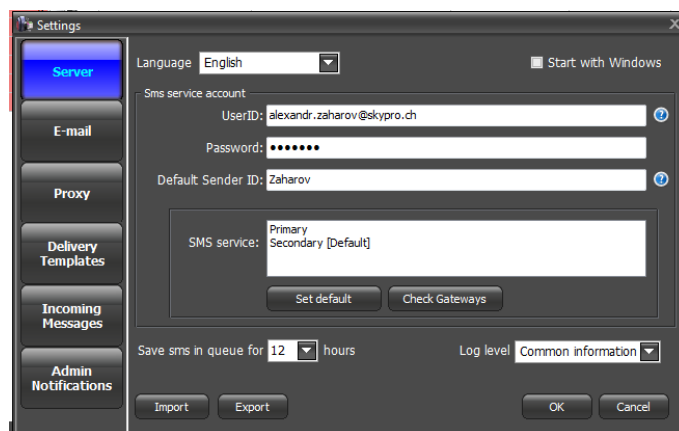
To set up the essential settings please follow the next steps.

Step 2 Enter your SMS service account information

In the tab **Server** enter the login details of your account on the website www.skypro.eu. Your SKySMS Server will be associated with this account for sending SMS messages via SKyPRO SMS Gateway.

Fill in the following fields:

1. **User ID** – your email address which you used to create your account on www.skypro.eu.
2. **Password** – your account password that you received after the registration.
3. **Default sender ID** – a string which your SMS receivers will see as a sender name.



As a bonus, the SKyPRO Company gives 2 USD to every new registered SKySMS user immediately after the registration. Hereby, right after your SKySMS server is installed and configured, you can start sending SMS use this sum of money during the trial period. Further you can add money to this account to continue using the service.

Step 3 Set up your email account

To start working with the SKySMS server we recommend you to create a separate mailbox which will be used by the SKySMS server for processing the SMS messages which will be received in the form of emails. Please specify the mailbox settings in the **E-mail** tab:

Select one of the account types:

- GroupWise
- Gmail
- Microsoft Exchange
- Or an account of any other email service ([please note](#), in this case the access to the email address books will be impossible).

The screenshot shows the 'Settings' dialog box with the 'E-mail' tab selected. The 'Email server account' section has 'Provider' set to 'GroupWise'. The 'Account parameters' section includes 'Login' (vitaliyo), 'Password' (masked), 'Domain' (skgww.skypro.ch), and 'Port' (1677). There are checkboxes for 'Remove sms from mailbox' and 'Track messages on the email server every 15 seconds'. The 'Import' and 'Export' buttons are at the bottom.

The necessary settings depend on the provider type you have selected.

GroupWise

If you use GroupWise as a provider, please choose GroupWise from the dropdown list

Provider and fill in the following fields:

- **Login** – login to access the selected GroupWise account.
- **Password** – password of your GroupWise account.
- **Domain** – an address of the email storage server in the mail system GroupWise.
- **Port** – a port number carries out the information exchange with the email system GroupWise.

This screenshot is identical to the one above, showing the 'Settings' dialog box with the 'E-mail' tab selected and 'GroupWise' as the provider. The fields are filled with the same values: Login: vitaliyo, Password: masked, Domain: skgww.skypro.ch, Port: 1677.

Gmail

If you use Gmail:

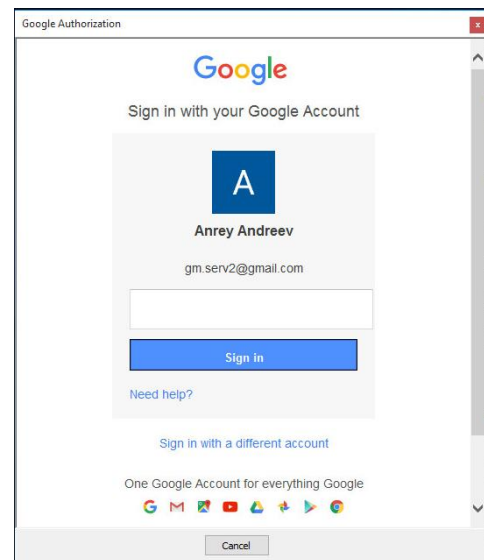
1. Select Gmail from the dropdown list **Provider**

The screenshot shows the 'Settings' dialog box with the 'E-mail' tab selected. The 'Email server account' section has 'Provider' set to 'Gmail'. The 'Account parameters' section includes a 'Sign in to Google Services' button and a 'Login' field (testuser1.test1@gmail.com). There are checkboxes for 'Remove sms from mailbox' and 'Track messages on the email server every 15 seconds'. The 'Import' and 'Export' buttons are at the bottom.

2. Click "**Sign in to Google Services**" button to open the Gmail authorization window.

3. Enter data of your Gmail account and allow access to it by clicking the **Allow** button.

When completed the email address of your Gmail account will appear in the field **Login**.

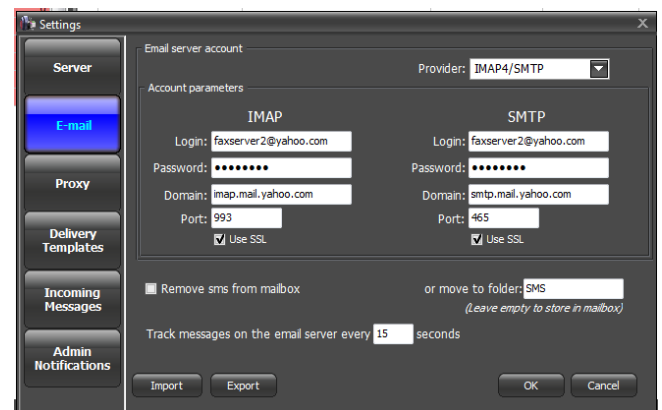


Another email system

If you choose another email system as a provider, you will need:

1. To select IMAP4/SMTP from the dropdown list **Provider**
2. To fill in the account data for incoming messages (IMAP) and for outgoing messages (SMTP).

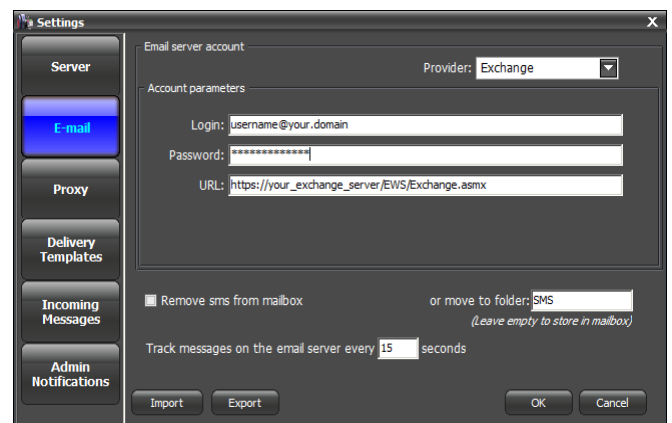
- ✓ In the field **Login** please specify the email address used by the account,
- ✓ In the field **Password** add the password for this email account
- ✓ In the field **Domain** enter the IMAP and SMTP servers respectively.
- ✓ If the email system uses encoding, while receiving and/or sending correspondence, please tick **Use SSL** check boxes.



Exchange

If you use Exchange as a provider:

1. Select Exchange from the dropdown list **Provider**.
2. Fill in the fields **Login** and **Password**
3. In the field **URL** enter the EWS address of the email server (Usually it is an email server address which is followed by /EWS/Exchange.asmx).




Step 4 Add users

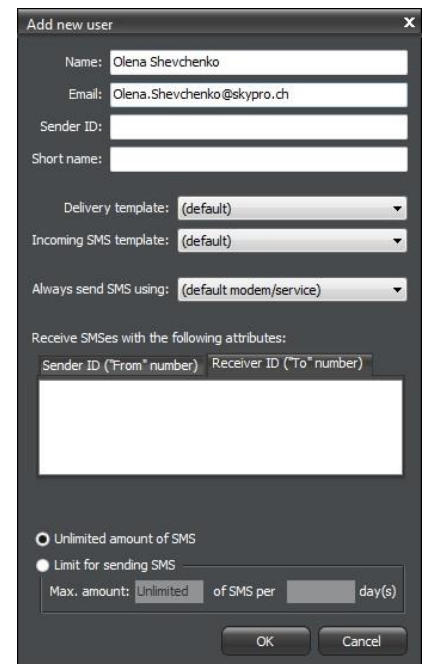
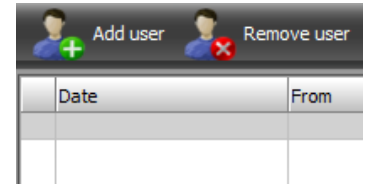
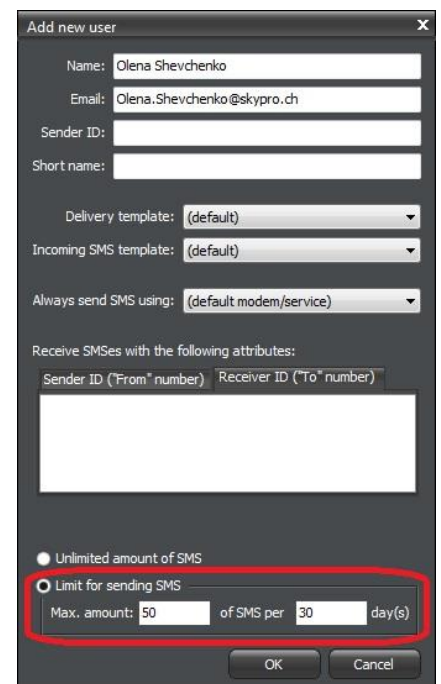
Add users that will be allowed to send SMS text messages via your SKySMS Server.

There are several ways to add users. (Read more [§7.1 of the SKySMS Server Manual](#).) In this Guide we describe only the manual way of adding users:

- Click "**Add user**" button in the toolbar.
- When the "Add new user" window appears, fill in the user's profile. The **fields Name** and **Email** are obligatory (Each user is identified by its email address).

 Please note that in the trial version you are allowed to add up to 20 users.

If it is necessary, you can set up the limit of SMS allowed to be sent by each user for a certain period of time. To do so, please mark the checkbox **Limit for sending SMS** and fill in the fields **Max.amount ... of SMS per ... day(s)**.

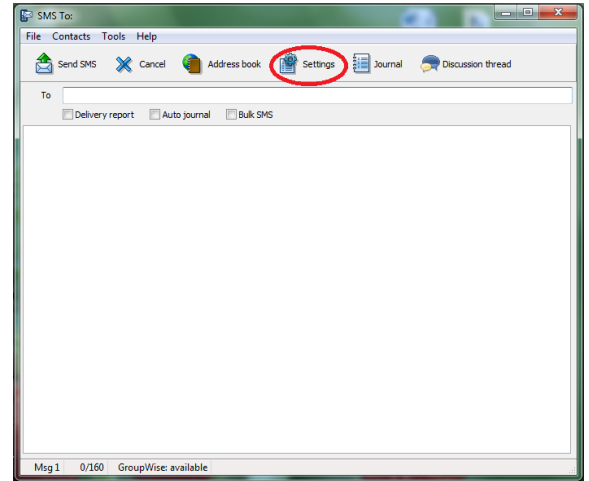
A dialog box titled 'Add new user' with fields for Name, Email, Sender ID, and Short name. It also has dropdown menus for Delivery template, Incoming SMS template, and Always send SMS using. Below these are checkboxes for 'Receive SMSes with the following attributes' and a table for Sender ID and Receiver ID. At the bottom, there are radio buttons for 'Unlimited amount of SMS' and 'Limit for sending SMS', with the latter being selected. The 'Limit for sending SMS' section has fields for 'Max. amount' (set to 'Unlimited'), 'of SMS per', and 'day(s)'.The same 'Add new user' dialog box, but with the 'Limit for sending SMS' radio button selected. The 'Max. amount' field is now set to '50' and the 'day(s)' field is set to '30'. A red rectangle highlights the 'Limit for sending SMS' section.

Step 5 Install and configure the SKySMS Client

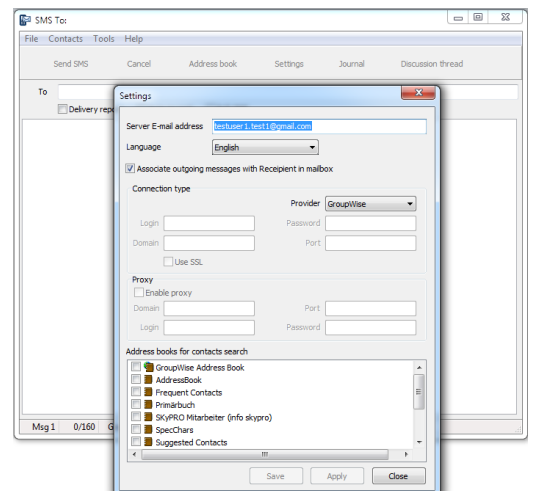
Download from [SKyPRO Website](#) and install the SKySMS Client.

Each user added by you to the user's list in the previous step will be able to send SMS to your SKySMS Server using the SKySMS Client.

For the minimum configuration of the SKySMS Client just specify the email address of your SKySMS server. To do so, start the SKySMS Client and click the **Settings** button on the toolbar.



Enter the SKySMS Server email address (see step 3) in the **Server E-mail address** field:



Note:

1. Like the SKySMS server, the SKySMS Client can also use different types of email accounts from the list above (see step 3). While choosing an email provider, follow the same recommendations which were specified in step 3 of this Guide.
2. If you choose GroupWise, Gmail or Exchange, you can also use the address books of these accounts to search the receivers' phone numbers. Specify the address books you need in the field **Address books for contacts search**.



Should you have any questions or need further assistance, do not hesitate to contact SKyPRO support at any time. Besides writing an email to swsupport@skypro.ch you can contact us 24/7 in the live chat following the next link: <http://skypro.eu/support.aspx>